

# Bourdon tube pressure gauge VCR® compatible process connection, safety version Model 232.35

WIKA data sheet PM 02.11



for further approvals  
see page 2

## Applications

- Increased safety requirements for personal protection
- For gaseous and liquid, also aggressive media, also in aggressive ambience
- Semiconductor and flat panel industry
- Gas distribution systems, medical gases, hook-up application

## Special features

- Safety pressure gauge with solid baffle wall designed in compliance with operational safety requirements of EN 837-1
- VCR® compatible process connection
- Helium leak tested
- Electropolished case (option)



Bourdon tube pressure gauge, model 232.35.63,  
VCR® compatible process connection with male nut

## Description

### Design

EN 837-1

### Nominal size in mm

63

### Accuracy class

1.6

### Scale ranges

0 ... 1 to 0 ... 400 bar (0 ... 15 to 0 ... 6,000 psi)  
or all other equivalent vacuum or combined pressure and vacuum ranges

### Pressure limitation

Steady: 3/4 x full scale value  
Fluctuating: 2/3 x full scale value  
Short time: Full scale value

### Permissible temperature

Ambient: -40 ... +60 °C  
Medium: max. 100 °C

### Temperature effect

When the temperature of the measuring system deviates from the reference temperature (+20 °C):  
max. ±0.4 %/10 K of full scale value

### Ingress protection

IP54 per EN 60529 / IEC 60529

VCR® is a registered trademark of Swagelok

## Standard version

### Process connection

Stainless steel 316L

Lower mount (LM) or back mount (BM)

- VCR® compatible process connection optionally:
  - with union nut
  - with male nut
  - male thread 9/16-18 UNF fixed
- Weld-in connection

### Pressure element

Stainless steel 316L

< 100 bar: C-type

≥ 100 bar: Helical type

Leak test: Leak rate ≤ 10<sup>-9</sup> mbar · l / s

Test method: Helium mass spectrometry

### Movement

Stainless steel

### Dial

Aluminium, white, with pointer stop pin

Black/red lettering, dual scale psi/bar

### Pointer

Aluminium, black

### Case

Stainless steel, with solid baffle wall (Solidfront) and blow-out back, scale ranges ≤ 0 ... 16 bar (lower mount) with compensating valve to vent case

### Window

Polycarbonate

### Bezel ring

Bayonet ring, stainless steel

### Cleaning

Cleaned for oxygen service

## Options

- Other process connection
- Sealings (model 910.17, see data sheet AC 09.08)
- Electropolished case
- Higher accuracy class 1.0
- Panel mounting flange, stainless steel, electropolished (for back mount connection)
- Switch contacts
  - Magnetic snap-action contact (model 821)
  - Inductive contact (model 831)
  - Electronic contact (model 830 E)
  - Reed contact (model 851)

## CE conformity

### Pressure equipment directive

97/23/EC, PS > 200 bar, module A, pressure accessory

## Approvals

- **EAC**, import certificate, customs union Russia/Belarus/Kazakhstan
- **GOST**, metrology/measurement technology, Russia

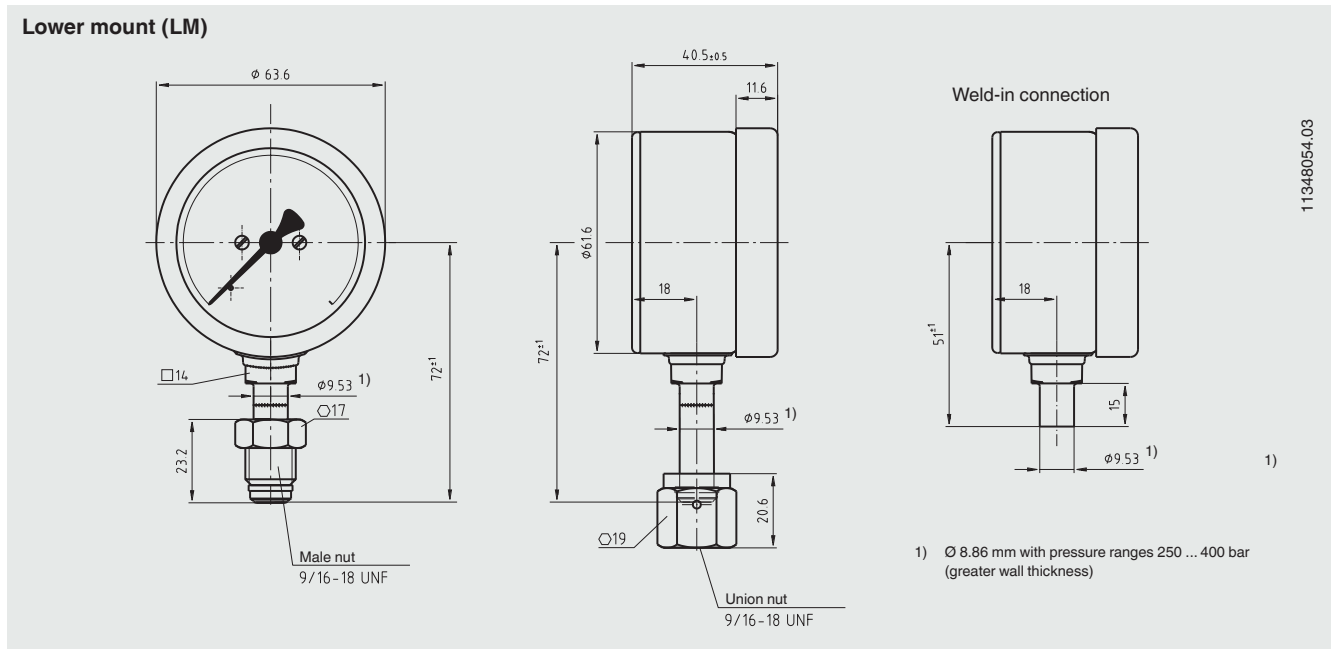
## Certificates (option)

- 2.2 test report per EN 10204 (e.g. state-of-the-art manufacturing, material proof, indication accuracy)
- 3.1 inspection certificate per EN 10204 (e.g. material proof for wetted metallic parts, indication accuracy)

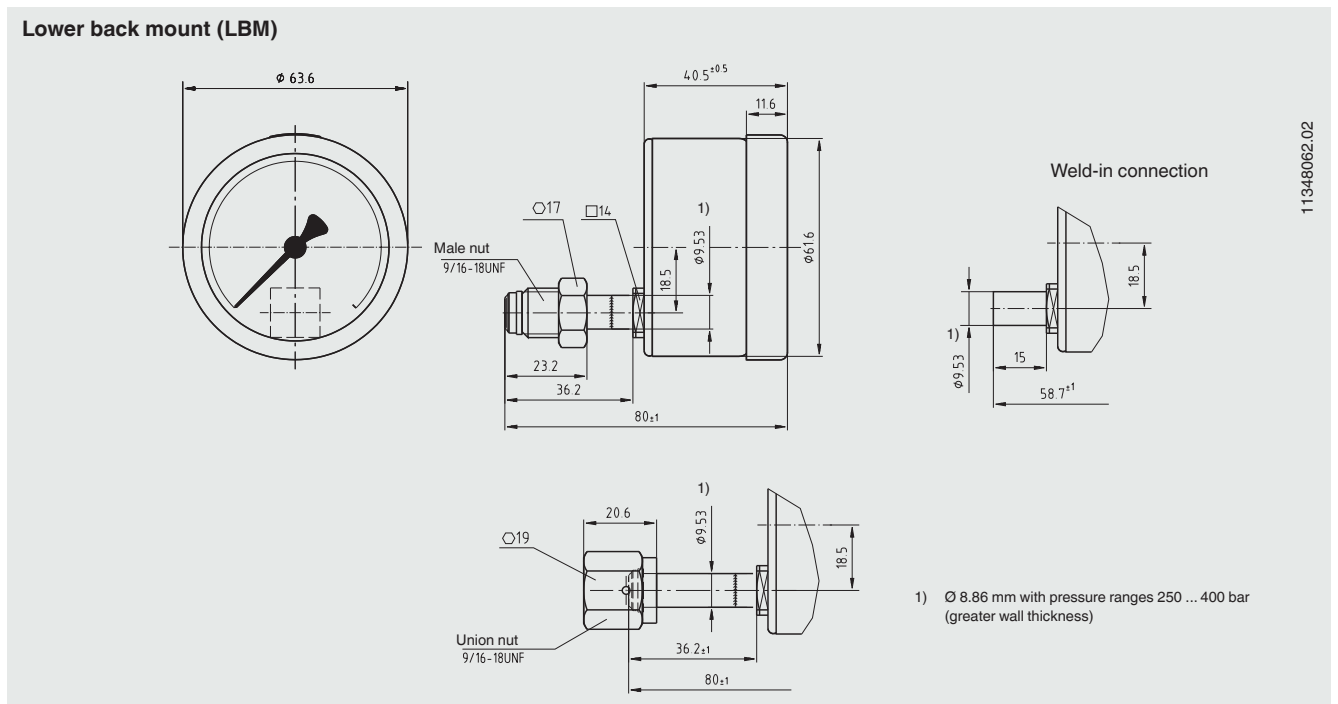
Approvals and certificates, see website

# Dimensions in mm

## Standard version



11348054.03



11348062.02

## Ordering information

Model / Nominal size / Scale range / Connection size / Connection location / Options

© 2008 WIKA Alexander Wiegand SE & Co. KG, all rights reserved.  
The specifications given in this document represent the state of engineering at the time of publishing.  
We reserve the right to make modifications to the specifications and materials.

